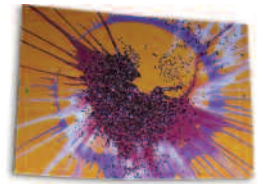


Toddler Learning Center

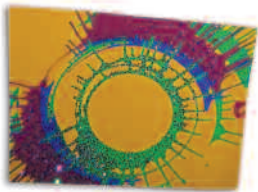
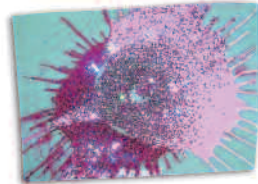
- Ages 18 months to 3 years
- Need not be self-toileting
- 9 to 11:30am
- Monday, Wednesday, Friday
- 1, 2, or 3 days of your choice

TLC is a wonderful introduction to your child's early school experience. Mornings are just long enough for children to play with others, and for parents to run errands or get to that doctor appointment!

Teachers are caring, creative and experienced parents who understand the developmental stage of little ones.



- Arts & Crafts
- Dancing
- Faith-based Lessons
- Singing
- Snacks
- Socialization
- Storytime



Preschool

- Ages 3 to 5
- Must be self-toileting
- 5 mornings: 9 to 11:30am
- 3 afternoons: 11:30am to 2pm
- Your choice of days

Preschoolers spend their days in a careful combination of free play, directed play, group and independent activities. Learning to make choices and working independently are important components of our day. At Creation Corner, children are encouraged to express themselves through music, art, and creative movement while discovering the basics of academics and social responsibility. Faith-based themes, focused in Christian values, tie our curriculum together. In addition to our full mornings, preschoolers enjoy eating and playing together during our "Afternoon Adventures" program throughout the school year.

- Academic Education
- Arts Education
- Cognitive Development
- Community Awareness
- Conceptual Development
- Faith-based Education
- Kindergarten Readiness
- Personal Awareness
- Social Education



Summer Camp

- Ages 2 to 6
- Explorers: M, W, F
- Navigators: 5 mornings
- 9 to 11:30am
- Up to 8 weeks in June & July

A two-week Summer Camp is offered at Creation Corner for preschoolers during the mornings following Memorial Day each year. Children meet outdoors, weather permitting, for a short play time and circle game before going into the air-conditioned classrooms. Each day has a theme which is carried out in activities, games, arts & crafts, singing & dancing, snacks, and fun. Bathing suits are sometimes required! Camp is extended through July for children ages 2 to 6 (entering Grade 1). This program is not restricted to Creation Corner families – we welcome new friends and families to join us for this exciting time of year!

- All ages
- Arts & Crafts
- Fun & Games
- New Friends
- Singing & Dancing
- Social Development
- Theme Days



Kindergarten

- Must be age 5 by Nov. 1st
- Full-Day program (9am to 3pm)
- Half-Day program (am or pm)
- Kindergarten enrichment
- Registered with PA Dept. of Ed.

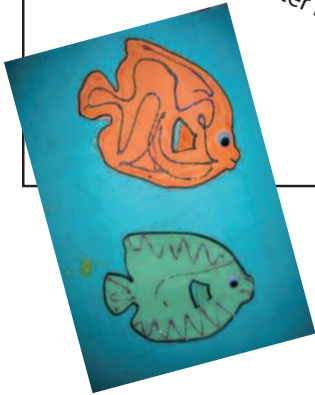
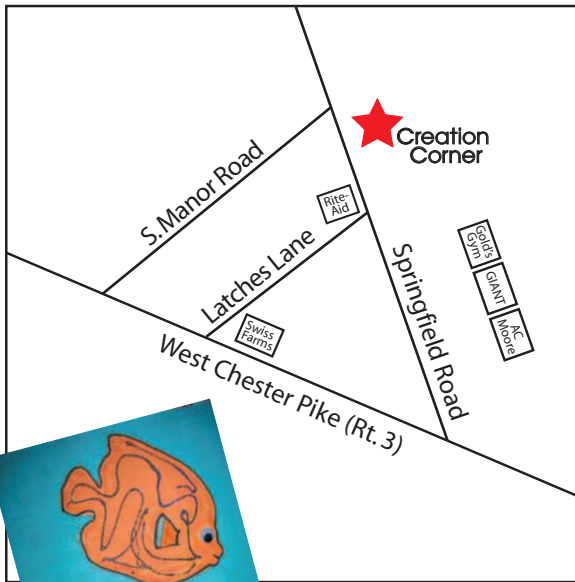
Our Kindergarten offers families a choice of programs which will compliment other area Kindergartens, or as a singular option. Small classes, with individualized instruction, will always be a priority at Creation Corner. Teachers are certified in Early Childhood Education, and are experienced in teaching at the elementary school level. Our comprehensive curriculum will include weekly art and music classes, physical education, science, and Faith-based instruction. The goal at Creation Corner is to prepare children for their formal education with a solid academic and social base in a safe and welcoming environment. Creativity and Christian values are practiced daily.

- Art
- Music
- Faith-based Ed.
- Physical Education
- Language Arts
- Science
- Mathematics
- Social Studies

Limited **Child Care** available for ALL Creation Corner families from 8 to 3:30 daily.



Location



2900 Springfield Road
Broomall, PA 19008

Phone: 610.356.6136
Fax: 610.356.7107

christumcbroomall.org

Creation Corner

A Christian Preschool & Kindergarten



Grow with us...
learn with us!



610.356.6136

christumcbroomall.org

Program

Program:

Creation Corner offers a curriculum based in the visual and performing arts, and Christian values. Each day, elements are drawn from all aspects of a unique and multi-faceted curriculum. The following are addressed daily at each age level: fine and gross motor skills, language arts, math concepts, writing skills, social development, and cooperative play. The most important aspect of our program is its effort to give each child a happy, educational experience by a caring and loving staff.



Special Events

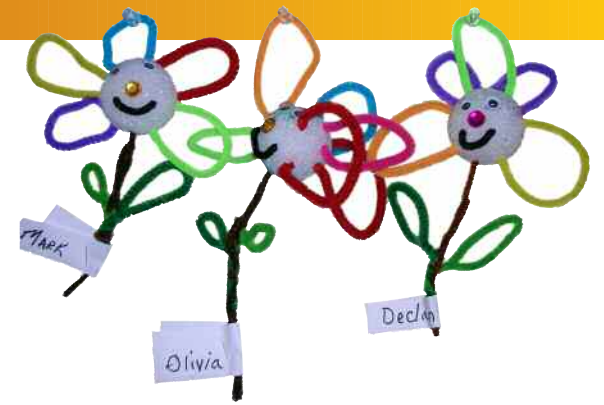
Special Events:

Parents and friends will be invited to join us as we celebrate special times throughout the year:

At **Thanksgiving**, children will participate in a program, remembering our national heritage, and learning the importance of giving thanks always.

At **Christmas** and **Easter**, we'll celebrate the New Life of Jesus and His Resurrection with music and movement for invited guests.

We Are Special as we celebrate the end of the school year together, with an "Evening of the Arts" for parents, family, and friends.



Philosophy

Philosophy:

Creation Corner was established in 2000 to provide a safe, enjoyable, and creative introduction to education for preschool children. In 2008, our program expanded to include a kindergarten. At all levels, students are encouraged to express themselves musically, artistically, and spiritually throughout the school year with qualified teachers and staff members in a positive, nurturing environment.

Creation Corner is open to all children, regardless of race, ethnic or religious background.

Creation Corner is open to special needs children whenever we are able to provide adequate care and a suitable educational experience. Each child will be considered for acceptance individually.



Mission Statement

Mission Statement:

To convey to children of our community something of the Divine nature of God, through the creative arts and the teachings of Jesus Christ. "Let the little children come to me, and do not stop them." (Luke 18:16)